

MEMBER SPOTLIGHT

This month's member spotlight features our newest Chamber member—Kingman County Humane Society.

What does your organization do?

"Kingman County Humane Society provides shelter, food, veterinary care, and TLC to lost and homeless pets in Kingman and surrounding counties, and promote lifelong pet adoptions."



What is your niche or target market?

"Encouraging positive, responsible relationships between animals and people has a long-reaching positive impact, not just locally. There are no boundaries when it comes to the emotional bond between humans and animals."

What got you interested in what you do?

"I think everyone in our organization realizes the tremendous benefits of having a pet as part of the family. It's truly an unconditional relationship that fosters the desire to give back in some small way, whether its volunteering to walk a dog, fostering a litter of kittens or donating."

Since the organization started, what has been the biggest win?

"Every time we find a home for a homeless pet, we consider our biggest win. Our next biggest win is right around the corner! Whether it's a cat that's adopted locally or a dog that's found a home in Seattle, each one is a celebration."

What makes you stand out from other organizations?

"Kingman County Humane Society is funded entirely by donations, fees, and occasional grants. We do not ask for and we do not receive any taxpayer dollars from federal, state, or local governments."

What are your personal goals for the organization?

"Our goal of Kingman County Humane Society is to remain a No-Kill shelter, find ways to reduce owner surrenders and to provide the best possible care for all animals in our custody."

Favorite quote:

"The greatness of a nation can be judged by the way its animals are treated." - Mahatma Gandhi



811 East C Ave
Kingman, KS 67068
Phone: (315) 542-1812
kchs@kingmancountyhumanesociety.org

kingmancountyhumanesociety.org

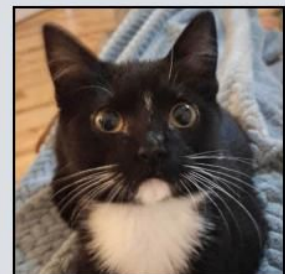


Meet Sandy
KCHS Ambassador

Adopt Me!



Radar
1 year old male



Hallow
5 month old female