

CHAMBER CONNECTIONS

A monthly publication of the Kingman
Area Chamber of Commerce

November 2024
Local Business Here for You



LET'S FLIP THE SWITCH

You could have a chance at turning on the downtown Christmas Lights on December 7th.

Raffle Tickets are only \$1 Each

BRICK ROAD COFFEE SHOP
109 N Main St
Kingman, Ks 67068

For tickets:

Turn on the lights and kick-off the parade!
Winner will be called on Saturday afternoon December 7th.



ACCEPTING SUBMISSIONS NOW!

SNOW PRINCE & PRINCESS

PARENTS CAN SUBMIT PHOTOS OF THEIR CHILD(REN) BETWEEN THE AGES OF 4 AND 7 YEARS. CHILD(REN) MUST LIVE WITHIN KINGMAN COUNTY.

Enter to Win a

\$2,500 Travel Voucher

\$25/ticket

Tickets are now available for purchase through the Kingman Area Chamber of Commerce. Each ticket is \$25. Tickets can be purchased through a member of the Chamber Board.

Contact Us:

Ashley Keimig	Darrian Williams
Leesa Beam	Shasta Wewe
Meredith Beat	Sara Adelhardt
Amy Wallace	Brianna Hook
Becky Pickett	

Winner will be drawn and announced by Santa Saturday December 7th during the Lighted Christmas Parade. You do not have to be present to win.

2024 Christmas Arts & Crafts Fair

SATURDAY DEC 7th **8 AM TO 1 PM**

KINGMAN ELEMENTARY SCHOOL GYM
607 N Spruce, Kingman, KS 67068



Annual Christmas Parade Day and Christmas Arts & Crafts Fair is brought to you by Kingman Area Chamber of Commerce.

Chamber Connections

A monthly publication of

KINGMAN
Area Chamber of Commerce

111 S Main Street
Kingman, KS 67068
Phone: (620) 532-1853
thekingmanareachamber@gmail.com

www.kingmancc.com

BOARD OF DIRECTORS

Ashley Keimig, President
Kingman Co. Appraisers
Office

Meredith Voran,
President Elect
Kingman Drug, Inc.

Leesa Beam, Treasurer
Citizens Bank of Kansas

Becky Pickett, Secretary
USD 331

Brianna Hook
Brick Road Coffee & Crafts

Sara Adelhardt
Fabpro Polymers

Amy Wallace
USD 331

Darrian Williams
Bombshell Studio

Shasta Wewe
Polished Coupe



HAPPY THANKSGIVING FROM
JACOBS SMALL ENGINE!



WE ARE SO GRATEFUL FOR OUR CUSTOMERS!

Thank you to the Kingman Community and surrounding
areas for supporting our small business, Kingman PROUD!



We will be closed early on Nov. 27 and closed till Dec. 2.
We will reopen on December 3rd with our normal hours.



Jacobs Small Engine LLC.

423 N. Marquette St. Kingman, KS 67068

Call us at 620 - 955 - 1199



2024

MEMBERSHIP

Current members, membership renewals for 2024 were mailed out at the beginning of December. Renewal fees were due January 31st, 2024. Membership applications are still being accepted at this time. We appreciate serving you and helping our community thrive!

Not a member yet? What are you waiting for? Contact our office to get started at (620) 532-1853 or www.kingmancc.com



**MEDICARE
PART D OPEN
ENROLLMENT**

OPEN ENROLLMENT IS:
OCTOBER 15-DECEMBER 7

Are you on the best
Medicare Part D
(Prescription) Drug plan?
Could you be saving
hundreds of dollars next
year by switching plans?
Talk with one of our
trusted advisors to make
sure you're not paying
more than you should!



CONTACT US:

**KINGMAN
DRUG**

Kingman Drug
211 N Main St
Kingman, KS 67068
620-532-5113



November 2024

@ Kingman Public Library



Sunday	Monday	Tuesday	Wednesday	Thursday	Friday	Saturday
					1 Moving and Grooving Storytime 10 am	2
3	4 LEGO Club @ 3:30pm	5 You and Me Playtime 10 am	6 Game Day! @ 3:30pm	7	8 Moving and Grooving Storytime 10 am	9 2nd Saturday Showdown 9 am - 2pm
10	11 LEGO Club @ 3:30pm	12 You and Me Playtime 10 am Book Club 12 pm	13 Game Day! @ 3:30pm	14	15 Moving and Grooving Storytime 10 am	16
17	18 LEGO Club @ 3:30pm	19 You and Me Playtime 10 am	20 Game Day! @ 3:30pm	21	22 Moving and Grooving Storytime 10 am	23
24	25 LEGO Club @ 1pm	26 You and Me Playtime 10 am Perler Beads 1 PM	27 Game Day! @ 1pm	28 Happy Thanksgiving! Library Closed!	29 Moving and Grooving Storytime 10 am	30



Help Make a Child's Christmas Brighter!

How to Help:

Make monetary donations to Kingman County Christmas Fund at Citizens Bank of Kansas.

Starting November 18th adopt an Angel at Citizens Bank of Kansas, Kanza Bank or Jeri's Kitchen. Return wrapped gifts by December 6th.

Starting November 18th donate toys and/or non-perishable food items at Citizens Bank of Kansas or White's Foodliner.

On December 7th donate a toy at designated locations at the 31st Annual KACC Lighted Christmas Parade.



2025 CALENDAR

\$20 **BUY NOW**

DECEMBER

kingman county humane society
811 East C Ave, Kingman

Help Us Make Every Day Count. Purchase our 2025 Shelter Animal Calendar & support our furry friends. Each month features a heartwarming rendition of one of our shelter pets. 100% of the proceeds will provide them with food, medical care and a safe haven. [CLICK TO BUY NOW](#)

BRUCE VETERINARY SERVICES, LLC LOW COST CLINIC

811 EAST C AVE

Monday Nov 4th

BY APPOINTMENT ONLY

Drop-off will be 8:30 - 9:00 am

Pickup will be 3:30 to 4 pm

If you are interested please email

spayday16@gmail.com

**or call 316-293-6167
to schedule an appointment**

SERVICES AVAILABLE

- Feline spay or neuter \$75
- Canine (male) neuter \$85
- Canine (female) spay \$125
- Oral Pain Meds (2 add'l days) \$20
- Rabies 1 yr Vaccination \$25
- Distemper Parvo Vaccine \$25
- Bordetella Vaccine \$25
- Feline Distemper (FVRCP) \$25
- Oral Routine Dewormer \$10
- Nail Trim \$10
- Microchip \$45
- Heartworm Test \$25
- Ear Cleaning \$10
- Anal Gland Expression \$10
- Card Transaction Fee \$5



Received Chamber Bucks as a gift and aren't sure where to spend them?

- Bombshell Studio
- Brick Road Coffee & Crafts
- Cancun Mexican Grill
- Cleo's Flower Shop
- Eck Agriculture
- Flair Hair Salon
- Folks Homecenter
- GCI Construction
- Jeri's Kitchen
- K-Town Wine & Liquor
- Kingman Drug
- Kingman Eye Care
- Kingman Hardware & Automotive
- Kingman Spirits & Wine
- Mollie's Attic
- Newberry Family Motors
- Pizza Hut
- Polished Coupe
- Prairieland Partners
- Rise Chiropractic
- Sonic Drive-In
- Tornado Sno
- T&W Meat
- Trina's Tax Service
- White's Foodliner
- X-perience Salon & Massage

**Have you ever wanted to be part of a
Wonderful organization?**

The Kingman County Historical Society is
looking for some enthusiastic people to
join us.

We meet on the 4th Monday of the month.

Dues are \$50.00 Per Year Per Person
(October 1st – September 30th)



RETIRE TO ABUNDANCE
As Featured On:

CBS NEWS **msn**
Aol. **USNews**
Nasdaq
yahoo!finance
GOBankingRates
Summa Money **COMPARISON**
And MORE!

We know that investments and talks of retirement can be overwhelming and sometimes feel like a foreign language you don't understand. Tyler Meyer at Q.E.D. Wealth Solutions is a "wealth" of information to help get you started on the right path towards retirement.



Tyler Meyer shares his knowledge with his clients, but also with the public. He has been featured in various publications and podcasts including CBS News, AOL, Yahoo! Finance, and more!



YOUR FULL SERVICE PLUMBING COMPANY

DRAKE
Plumbing Company, Inc.

Over 20 Years Experience

24 HOUR EMERGENCY SERVICE

Residential • Commercial

New Construction • Remodeling • Backflow Testing • Sewer Service
Water Service New Or Repair • Gas Piping & Testing • Garbage Disposal Installation
Water Heaters & Softeners • **Serving Hutchinson, KS And Surrounding Area**

Zak Kirk - Owner | **620-662-8758**



KINGMAN HISTORIC THEATRE



THE BEST CHRISTMAS PAGEANT EVER

November 8th-10th

November 15th-17th

Show Times:

8th, 9th, 15th, 16th @ 7:30 p.m.

10th, 17th @ 5:30

Rated: PG

Tickets are \$3.00



MOANA 2

November 27th, 29th, 30th & December 1st

Show Times:

Nov. 27th, 29th, 30th @ 7:30 p.m.

December 1st @ 5:30

Rated: PG

Tickets are \$3.00

November

Brick Road Coffee
109 N Main St.
Kingman, KS
Closed Sundays & Mondays
brickroadkingman@gmail.com

Sunday	Monday	Tuesday	Wednesday	Thursday	Friday	Saturday
	Check out our Facebook and Instagram for drinks, raffles, & local fun!				1 Open 7-1	2 Open 8-Noon
3 Try out our Fall Flavors!	4	5 Open 7-1	6 Open 7-1	7 Open 7-1	8 Open 7-1	9 Open 8-Noon
10	11 Message us to preorder ground coffee!	12 Open 7-1	13 Open 7-1	14 Open 7-1	15 Open 7-1	16 Open 8-Noon
17 Don't miss out on Pumpkin Spice Season!	18	19 Open 7-1	20 Open 7-1	21 Open 7-1	22 Open 7-1	23 Open 8-Noon
24	25 Preorder iced coffee for your family Thanksgiving!	26 Open 7-1	27 Open 7-1	28 Thanksgiving CLOSED	29 Black Friday Open 7-Noon	30 Open 8-Noon

Class Times



Monday	Tuesday	Wednesday	Thursday	Friday	Saturday
5:15 AM BATTLE	5:15 AM BATTLE	5:15 AM BATTLE	5:15 AM BATTLE	5:15 AM BATTLE	7:00 AM OPEN GYM
8:30 AM LIFT		8:30 AM LIFT	5:30 PM OPEN GYM	8:30 AM LIFT	8:00 AM BATTLE
5:30 PM BATTLE		5:30 PM STRETCH & MOBILITY			

Shop \$5 Fridays

AT CLEO'S
FLOWER SHOP

CLEO'S Flower Shop

Order your Thanksgiving centerpiece now!
Starting as low as \$35.

Call us! 620-532-3883

Open Small Business Saturday
Loads of Deals! 9:00-Noon only



10% Off Wine Every Monday

Kingman

SPIRITS & WINE

10% OFF WINE
EVERY TUESDAY



HAPPY HOUR

1/2 PRICE DRINKS & SLUSHES
EVERY DAY 2-4PM



HELPING YOUR BUSINESS THRIVE



DREW BERRY
dberry@kanzabank.com
620.322.4034
NMLS ID # 1756271



GREG SCHREINER
gschreiner@kanzabank.com
620.322.4034
NMLS ID # 641930





Leesa Beam

620.532.5162

lbeam@cbok.com

NMLS #1722402

www.TeamCBK.com



Leesa Beam knows Kingman and mortgage loans!

But don't take our word for it... see what others have to say.

“

Leesa was so helpful and made the whole process simple and stress-free. Leesa's willingness to communicate and keep our family up to date with all the documentation deadlines was first class. She was organized, professional, and always found time to answer questions. I would recommend anyone in the Kingman community to contact Leesa. - Kyle & Maggie

“

Leesa would let us know what needed to be done and was very helpful. She was patient with us during this process and answered questions we had in a way we understood! We appreciate all Leesa has done for us throughout the process. Leesa and Citizens Bank of Kansas make the home buying process easy! - Wade & Allison

“

Leesa was incredibly easy and seamless to work with from the beginning of our mortgage loan process all the way to the date of close. She was always prompt to return phone calls and get back with us if we had questions. She even got us a cute little gift to celebrate our closing with the coordinates of our house that's hanging in our living room! If we ever need another mortgage loan, Leesa and Citizens Bank of Kansas will be the first call we make. - Tanner & Logan

Call Leesa today at 620.532.5162 and get ready to find your dream home!



 Member
FDIC
NMLS # 402895

Mentors of the Month

Hadley Garrison & Ellie Shilling

Good job girls! We are PROUD of you both:)

These girls are exceptional mentors! They are dependable, reliable and go above and beyond to be there for their mentees. YCM is very fortunate to have them on our team!



JD's Bar-B-Q

Nuthin' but smoke

Mike and Traci Swigart
Mobile BBQ and catering

620-338-7694

THE ADJUSTMENT

RESETS

RE-ALIGNS

RE-CLAIMS

RE-STARTS

RE-SPARKS

RE-CALIBRATES

RE-CONNECTS

RESTORES



A black and white photograph of a Kingman Eagle Stadium Chair, which is a folding chair with a high backrest.

**ORDER
NOW**

8th Grade Class Fundraiser

A logo for "KINGMAN" featuring the word "KINGMAN" in a bold, red, sans-serif font, with a stylized eagle graphic below it.

Order your Kingman Eagle Stadium Chair Online at:

www.MyTeamGear.com

Click on the Team Stores Tab and then the this icon

STORE CLOSING 11/10/23





The Donley Building, 437 Cedar, Kingman, Ks 67068

620-553-5040

NOW offering



- Injections to help promote **weight loss** (semaglutide)
- Platelet Rich Plasma for **joint pain**
- Platelet Rich Plasma facials for **acne scars and wrinkles**.

***These services are not covered by insurance.

Call 620-553-5040 for more information!



KHS VETERANS' PROGRAM

WHEN: 11/11/24 @ 10:00 AM

WHERE: KHS VARSITY GYM

★ ★ ★ ★ ★
**THANK YOU
VETERANS**

WE TRULY VALUE YOU

JOB OPPORTUNITIES

OUR REHAB SERVICES DEPARTMENT IS GROWING!

We are looking for licensed therapists to join our busy Rehab Team.

If you are interested, visit our website kingmanhc.com for more information.

- Physical Therapist
- Physical Therapy Assistant
- Occupational Therapist
- Occupational Therapy Assistant

EXCELLENT BENEFITS!

KINGMAN REHAB
HEALTHCARE CENTER SERVICES 760 WEST D AVENUE
KINGMAN, KS 67068



KHC FAMILY CLINIC IS HIRING!

RN, LPN, MA, CMA, or CNA

- ✓ Full-Time
- ✓ Monday-Friday
- ✓ Excellent Benefits!!



FOR MORE INFORMATION, VISIT OUR WEBSITE AT KINGMANHC.COM

KINGMAN
HEALTHCARE CENTER
Exceptional Care. Every Time.

LOCATED INSIDE KHC
750 WEST D AVENUE
KINGMAN, KANSAS 67068

Kingman Healthcare Center Jobs

Clinic Referral Coordinator - Full-time

This individual will serve as a liaison for the patient, facilitating communication between our Family Clinics and any specialists they are referred to.

Job duties include:

- Helping to navigate outside referrals from our clinic providers to specialty providers
- Assisting with prior authorizations and classifying medical records/documentation
- Other duties associated with medical records and/or billing Medical Records or Bill Experience Preferred.

Cook - Part-Time

- The Nutrition Services Department is looking for a part-time cook

Registered Nurse (RN) - Night Shift Med-Surg Floor

- KHC is seeking an RN to join their night-shift team
- This position is 3, 12 hours shifts (7:00pm-7:00am) per week
- EXCELLENT perks and benefits including self-scheduling!
- For more information, contact Marissa, Director of Nursing at marissag@kingmanhc.com

Registered Nurse (RN) - Full-Time and PRN: Med-Surg Floor

- KHC is seeking an RN to join their team
- Full-time and PRN positions available
- For more information, contact Marissa, Director of Nursing at marissag@kingmanhc.com

CNA: FT Hospital Day-Shift 12hr - FT Hospital Night-Shift 12hr

- KHC is seeking an RN to join their night-shift team and day-shift team
- We offer incredible benefits including SELF-SCHEDULING!!!

To apply for these jobs at Kingman Health Care Center, please visit their website at: www.kingmanhc.com and click on the 'Careers' tab. **Excellent Benefits!**



Concrete Enterprises -We are **HIRING!** We have Class B CDL driver positions open at our Pratt and Kingman locations. Local haul, home every night, Mon-Fri. 401k with company contribution, paid holidays, vacation, EAP program, health/dental/vision insurance. Starting pay \$20-\$22 depending on experience. Call 620-532-1165 to apply.



**FULL-TIME
PARAMEDIC,
AEMT, AND EMT
POSITIONS
AVAILABLE**





**WE ARE
HIRING**
JOIN OUR TEAM

Our Service:

- 24/48 Schedule
- No living requirement
- 950-1050 calls per year
- 720 sq miles of coverage
- Longer transport times with progressive protocols-providers work to full-scope
- In-house rescue team

Benefits:

- All necessary CE hours provided by the department including online training and paid in-person training
- Paid recertification fees
- KEMSA Membership
- KPERS Retirement
- 100% paid family medical insurance
- \$10/month family dental
- Life insurance policy

<https://cityofkingman.com/government/jobs/>

JOB OPPORTUNITIES

Sheriff's Office Jobs

The following jobs come with a \$1,500 retention bonus with the Kingman County Sheriff's Office.



- Kingman County Sheriff's Office is currently seeking a professional and qualified individual for the position of full time **Deputy Sheriff**. Kingman County offers excellent competitive benefits with family plan insurance. **Start with academy \$21.87/hr.**

Without academy will be determined based on one's background; For application, qualifications, and job description, contact the Kingman County Sheriff's Office

For application, qualifications, and job description, contact the Kingman County Sheriff's Office at (620) 532-5133 or stop by 120 N Spruce in Kingman, or contact Brent Wood at the Kingman County Sheriff's Department / Brenton.Wood@leo.gov, EOE.

The city of Kingman is hiring

- Volunteer Fireman
- Fire Chief
- Police
- Paramedic, EMT
- Park Laborer
- Sent applications to the city office P.O. Box 168 or email Graffman@cityofkingman.com

Wheatlands Health Care Center
750 W Washington
Kingman, KS 67068
620-532-5801

JOIN OUR TEAM

OPPORTUNITIES:

- Full time RN or LPN – Dayshift
- CNA or CMA –2nd shift FT/PT/PRN– week day availability is a bonus!
- TLC Activity Aide– day shift

APPLY:
ONLINE:
www.wheatlandshealthcarecenter.com or
stop by in person to pick up a paper application!



Wheatlands
HEALTH CARE CENTER
ASSISTED LIVING

**WE'RE
HIRING**

Kingman
Eye Care

JOIN OUR TEAM

- ✓ Front desk reception
- ✓ Optical patient care
- ✓ Flexible schedule
- ✓ No experience necessary
- ✓ Excellent benefits package



APPLY NOW

For job details, apply within
Kingman Eye Care
104 W. C. Avenue
620-532-3154

Full time position open at Kingman Eye Care!

Excellent benefits include:

- *Full paid medical insurance for the employee (BCBS)
- *Retirement plan
- *3 weeks PTO
- *Longevity PTO
- *Paid holidays
- *Free eye exams for immediate family
- *Glasses and contacts each year for employee
- *Product at our cost for immediate family
- *Family first flexibility
- *Competitive wages

Hours are:

Mon-Thurs 7:45am-5pm
Fri 7:45am-3pm

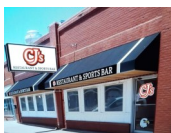
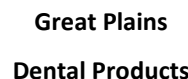
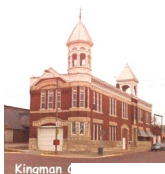
**For more details, contact Amy, Office Mgr.
620-388-8764**

USD 331 IS CURRENTLY
ACCEPTING
APPLICATIONS FOR A CROSSING GUARD AT KES.

ALL BUILDINGS ARE SEEKING PARAPROFESSIONALS,
SUBSTITUTE TEACHERS AND
KITCHEN SUBSTITUTES.



FOR MORE INFORMATION VISIT WWW.KNUSD331.COM
AND CLICK ON EMPLOYMENT



Milford Appraisal Service

Relax & Revitalize Massage

GCI Construction & Roofing

